

A photograph of a forest path. In the foreground on the left, a large tree trunk is visible with a white mark on its bark. A path leads into the distance, flanked by trees and fallen logs. The ground is covered in brown leaves and twigs. A text box is overlaid in the center of the image.

CREATE YOUR PATH

DARIN J. EICH, PH.D.



DISCOVER

INTEGRATE

FOCUS

A photograph of a wooden boardwalk with railings, leading into a forest. The boardwalk is made of light-colored wooden planks and has wooden railings on both sides. The path leads into a dense forest with many trees and green foliage. The lighting is soft, suggesting an overcast day or a shaded forest.

WHERE WE ARE GOING

EXPERIENCES

RESOURCES



ACADEMIC

Dartmouth Graduate Wins Rhodes Scholarship

POSTED ON NOVEMBER 21, 2010 BY LATARSHA GATLIN



Gabrielle Emanuel '10 of Evanston, Ill., was awarded the prestigious [Rhodes Scholarship](#) on November 20.

The Rhodes Scholarship is the oldest and best known award for international study and widely considered the highest post-graduate academic award available to American college graduates. The scholarship pays all expenses for two or three years of study at the [University of Oxford](#) in England. Emanuel is the seventy-third Dartmouth graduate to receive a Rhodes Scholarship.

Emanuel plans to pursue a DPhil in development studies to examine the



While at Oxford, Rhodes Scholar Gabrielle Emanuel '10

Dartmouth Junior Emma Smith Wins Truman Scholarship

POSTED ON MARCH 30, 2012 BY KELLY SUNDBERG SEAMAN



Emma Smith, a member of the Dartmouth Class of 2013, has been chosen as a 2012 [Harry S. Truman Scholar](#). The scholarship awards up to \$30,000 to college juniors to pursue graduate studies in public service fields and also provides assistance with career counseling, internship placement, graduate school admissions, and professional development.

Smith is a [history](#) and [geography](#) double major from Paola, Kan. She is also an enrolled member of the Osage Nation. The Truman Scholarship will enable her to pursue a Master of Laws in Human Rights, Conflict, and Justice at the University of London directly after graduating from Dartmouth. "Language study, including Arabic, will also factor into my degree," she says. "Afterwards, I'll be equipped to enter into on-the-ground work in conflict areas like Sudan and South Sudan. I want to



A woman with long brown hair, wearing a black cardigan, a brown patterned dress, and a red scarf, stands in a field of yellow flowers. Behind her is a large pile of harvested corn cobs. In the background, there are green hills and a few houses.

SARAH-MARIE

PROFESSIONAL





PERSONAL

**INNOVATE
TO GROW**

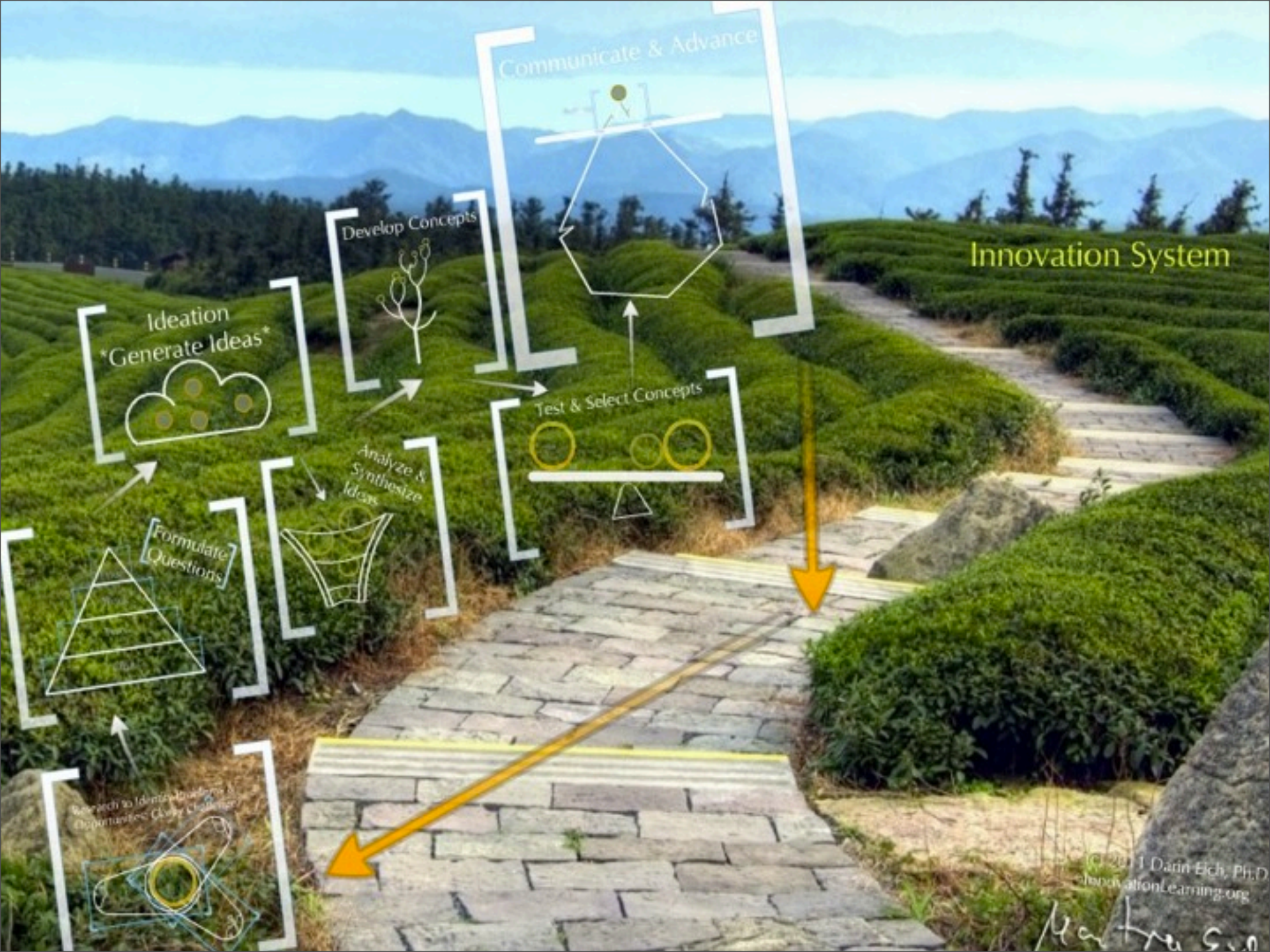


CREATE YOUR PATH

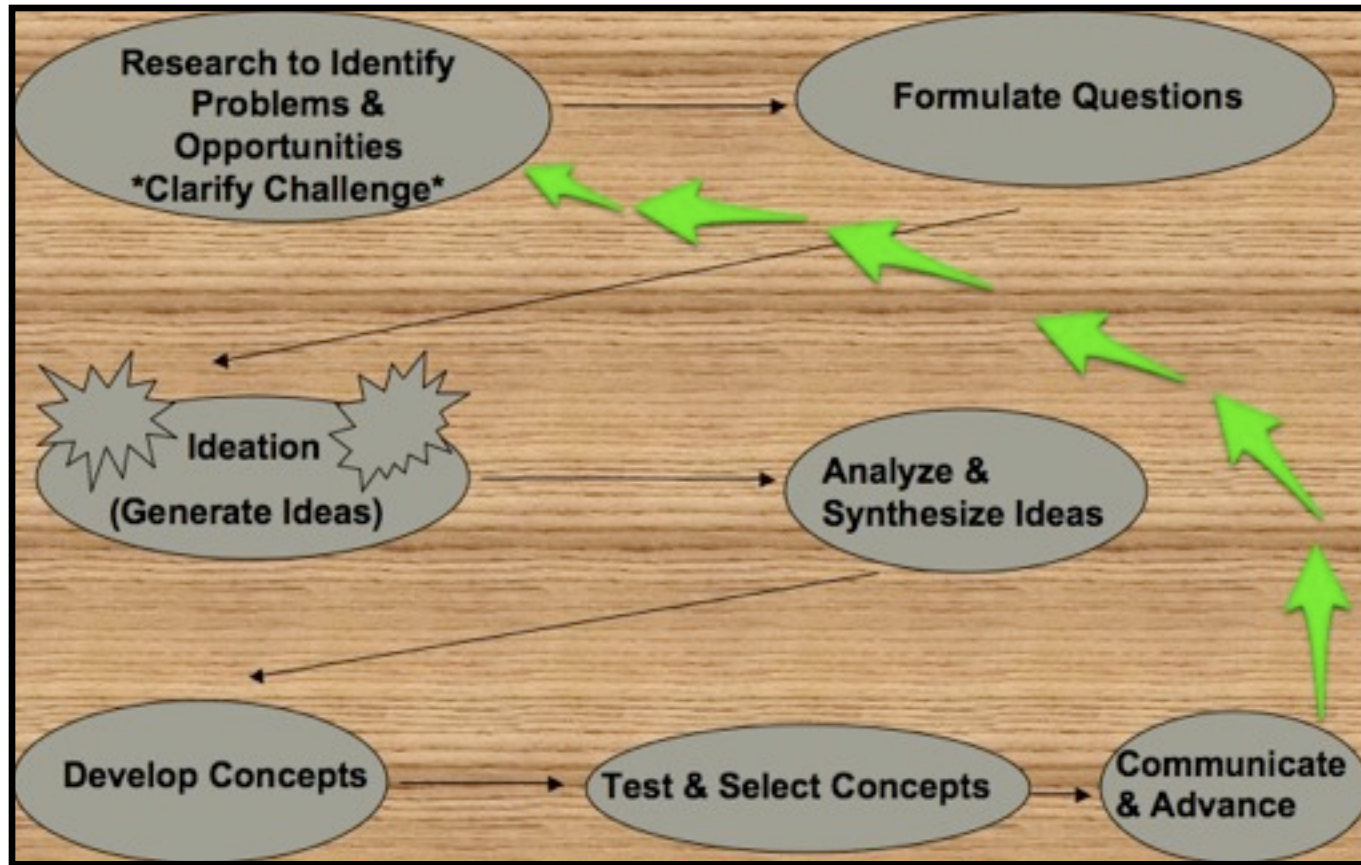


INNOVATE YOURSELF!

DARIN J. EICH, PH.D.

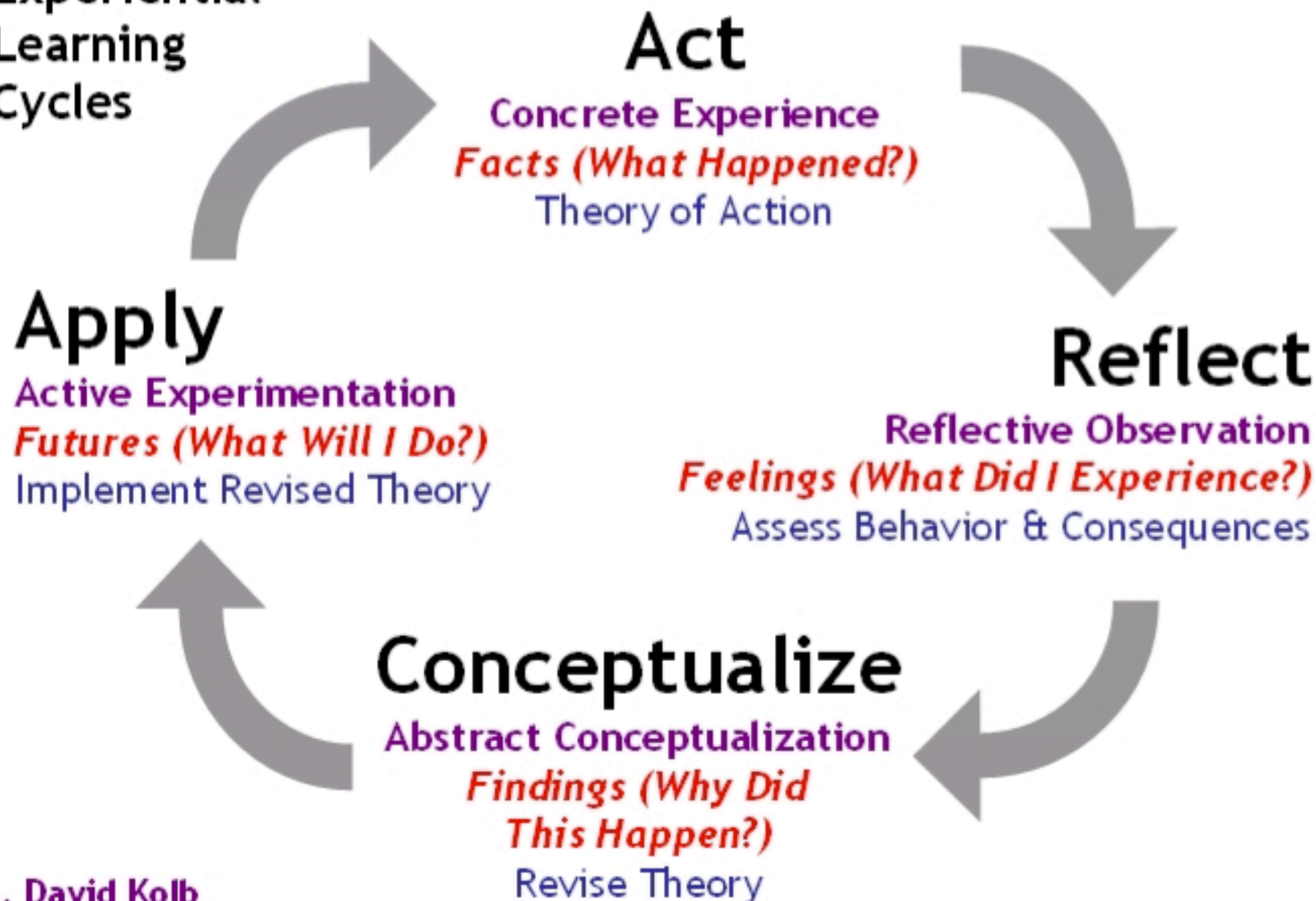


Apply an Innovation Process to your Life



© Darin Eich Ph.D., 2012
ProgramInnovation.com

Experiential Learning Cycles



1. David Kolb

2. Roger Greenaway

3. Chris Argyris & Donald Schön

compiled by Andrea Corney

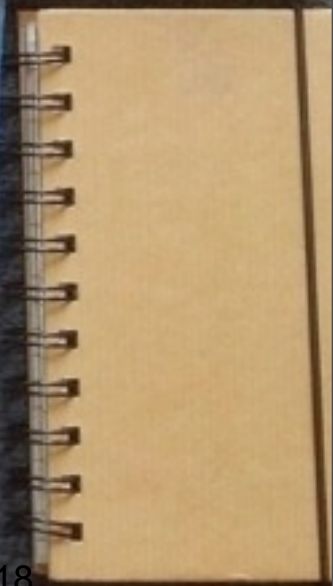
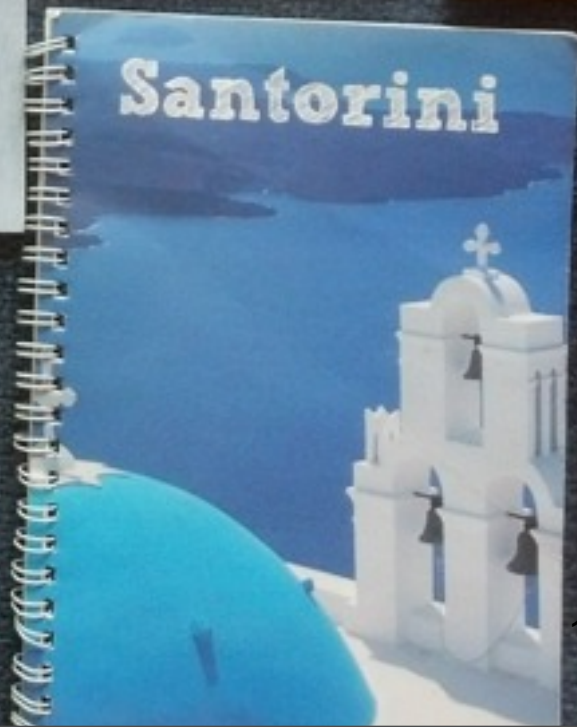
www.edbatista.com/2007/10/experiential.html

JOURNAL

D



Create Your Path



Key

Resources

Tucker Fnd.
 Career Services
 Design Thinking (C-Based Learning Course)
 Athletics / Coaches / PEHK
 Creative Writing / RWIT / 1st yr. Sem.
 Counseling + Mentor Programs
 CLOS, UGA, DASH

OPAL
 Stud. Org. e.g.
 WISP
 Faculty Adviser (Acad. Adv.)
 Scholarship Advising
 LTRK - Career Network

DOC - trips
 Tucker - Reflection
 OPAL - retreats
 Book Life
 Athletics - DP, F&S
WILL DO: Interviewing & Job Searching

Finding the Formula
 Depts giving funding for non-paying interns
 Resume Reviews
 Mock Interviews
 Service Trips - Community Based Learning
 Design Thinking - Community Based Learning

Ruby
 Tucker
 Dickar
 Career Services
 ISTS
 COSO org / Collis
 Deans office
 OLL
 Athletics
 working

Doc
 Funders
 Faculty / Academic Dept
 grad schools
 Alumni Relations
~~Research~~ Research & Advising
 Hop
 Hood
 The D

Health Resources

4082 Rockefeller Hall • Hanover, NH 03755-1514 • T 603.646.3874 • F 603.646.1319
<http://rockefeller.dartmouth.edu>

Centers on campus
 Jones Media Center
 professor office hours
 Internships experiences
 alumni relations
 career services

Faculty Advisors • Academic Depts

Career Socs
 Other Centers

Major Advisor
 Greek Advisor

Dicks House

Baker Library / Staff

Alum Peers
 Internship Finding
 + UGAR (Research)

CLASS DEANS
 FACULTY
 ALUMNI

PEOPLE / LEADERS
 CONTACTS
 Departments
 GSS
 Experiences

- professors
- Advisors
- Career services
- Rocky
- ~~professors~~
- Deans
- Mentors
- upperclass students
- Alumni

- Career services
- Skills assessment

- Counseling services

- off-campus programs

- Faculty

- Other students - UGA, etc

- UG Deans

- Community Directors

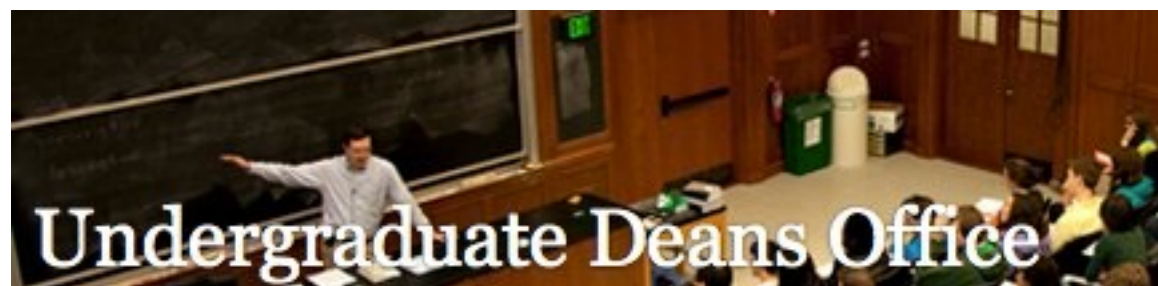


Dartmouth
Career Services





The Rockefeller Center for Public Policy and the Social Sciences at Dartmouth



- Resources--

- PEOPLE program--prepared me for UW-Madison
- McNair program---preparing for Ph.D. program
- URS--research experience, teaching at the University as an undergraduate, publishing as an undergraduate
- Rufus King-- the best public school in the city/showed me hard work pays off
- parents and sister--supportive in my quest
- TRIO--there are resources that are willing to help you grow
- ASA---showed me that I can create/grow an organization
- The power of Positive thinking--learned that our thinking process make up our happiness.
- Reading and reflecting--learning and growing from experience
- making plans...I am a planner, helps me make my next move seamlessly
- visualizing....as a method to experience something before it actually happens and/or to see if it is the right experience for me.
- seeking authenticity--living a life that is truly mine
- connecting with like minded people--reaffirming groups
- challenging myself---doing things I thought I couldn't do
- pushing myself---travel, education, research, connecting and reaching out
- creating my own reality
- connecting with people genuinely
- Being involved in social causes--there are things that are bigger than myself
- UW-Madison--being able to attend on of the top Universities
- President of RIOPA--able to create a sustainable blueprint and program for continued success.
- Elected member of ASM--I can have an impact/there are people that believe in what I do

Key Path Creating Resources

Rocky new program projects

MBTI

Strengths Finder

Tom M.

Paul W.

Harry

Clif

P&G innovation projects

Kellogg innovation projects

BMW innovation project

General Mills innovation project

Google

YouTube

TED

The Hero's Journey (Joseph Campbell)

Social Artistry Program

InnovationTrip

Open Innovation Conference

National Leadership

Symposium

San Francisco

Rishi

James T

Anand

UW MANIAC

DesignTeam

Innovation Cafés

Harvard Business Review

Twitter Innovation Follows

Craig

Rocky staff

Do More Great Work book

Key Path Creating Resources

Key Experiences

Reflect and identify 20 key experiences you have had, especially at Dartmouth. These can be academic, professional, or personal. They can be as small as moments or as big as full courses. The key is they had an impact on your learning & development.

Key Path Experiences

Europe backpacking trip

BrainReactions

Developing training

Facilitating sessions

Publishing book

Hiring John

UWVP Program

Create your Path Dev

USA Today Recruitment

Magna webinars

Online Innovation Training

FB App Dev in Chicago

India visit

San Diego Winter

Building WordPress blogs

Adwords campaign

KFIL DJ job

Travel to the first trade show in Dallas

Sales Training at Midwest Broadcasting

Website building with Dave M.

Yoga-First class at Inner Fire

Community of yoga at Bliss Flow

Road trip to W&M

LEAP program development

Class taught at Maryland

Maryland Leadership Conference

Julian Wera

Summer in San Francisco

Facebook account creation

Leadership Courses Monograph

Book publication

Grad student prof dev assistantship

GVSU grant project

UW Fellowship

NACURH Virginia Tech

NACURH UW La Crosse

Les Brown PBS episode

Moscow visit

Magna Webinar

InnovationTraining.org

marketing

Mayo Clinic Sports Psych

UWL Spring Leadership

Workshop

Airband MCing

LeaderShape Alerton

Leadershape Wisconsin I

Webinar marketing

Key Path Experiences

Key Path Creating Resources

Rocky new program projects

MBTI

Strengths Finder

Tom M.

Paul W.

Harry

Cliff

PSO innovation projects

Kellogg innovation projects

BMW innovation project

General Mills innovation project

Google

YouTube

TEP

The Hero's Journey (Joseph Campbell)

Social Artistry Program

InnovationTrip

Open Innovation Conference

National Leadership

Symposium

San Francisco

Rishi

James T

Amand

UW MANIAC

DesignTeam

Innovation Cafés

Harvard Business Review

Twitter Innovation Follows

Craig

Rocky staff

Do More Great Work book

Key Path Experiences

Europe backpacking trip

BrainReactions

Developing training

Facilitating sessions

Publishing book

Hiring John

UWVP Program

Create your Path Dev

USA Today Recruitment

Magna webinars

Online Innovation Training

FB App Dev in Chicago

India visit

San Diego Winter

Building WordPress blogs

Adwords campaign

KFIL PJ Job

Travel to the first trade show in Dallas

Sales Training at Midwest Broadcasting

Website building with Dave M.

Yoga-First class at Inner Fire

Community of yoga at Bliss Flow

Road trip to W&M

LEAP program development

Class taught at Maryland

Maryland Leadership Conference

Julian Wera

Summer in San Francisco

Facebook account creation

Leadership Courses Monograph

Book publication

Grad student prof dev assistantship

GSU grant project

UW Fellowship

NACURH Virginia Tech

NACURH UW La Crosse

Les Brown PBS episode

Moscow visit

Magna Webinar

InnovationTraining.org

marketing

Mayo Clinic Sports Psych

UWL Spring Leadership

Workshop

Airband MCing

LeaderShape Alerton

LeaderShape Wisconsin I

Webinar marketing

WHAT YOU DO NOW